
Marine Weather Forecast for Lighthouse Greece Pipeline-OSS4

Forecast valid as of 24-Apr-2022 1800 GMT

All times are local.

Today

No winds available.
No waves available.
No currents available.

Tonight

No winds available.
No waves available.
No currents available.

Monday

No winds available.
No waves available.
No currents available.

Tuesday Night

No winds available.
No waves available.
No currents available.

Tuesday

No winds available.
No waves available.
No currents available.

Wednesday Night

No winds available.
No waves available.
No currents available.

Wednesday

No winds available.
No waves available.
No currents available.

Thursday Night

No winds available.
No waves available.
No currents available.

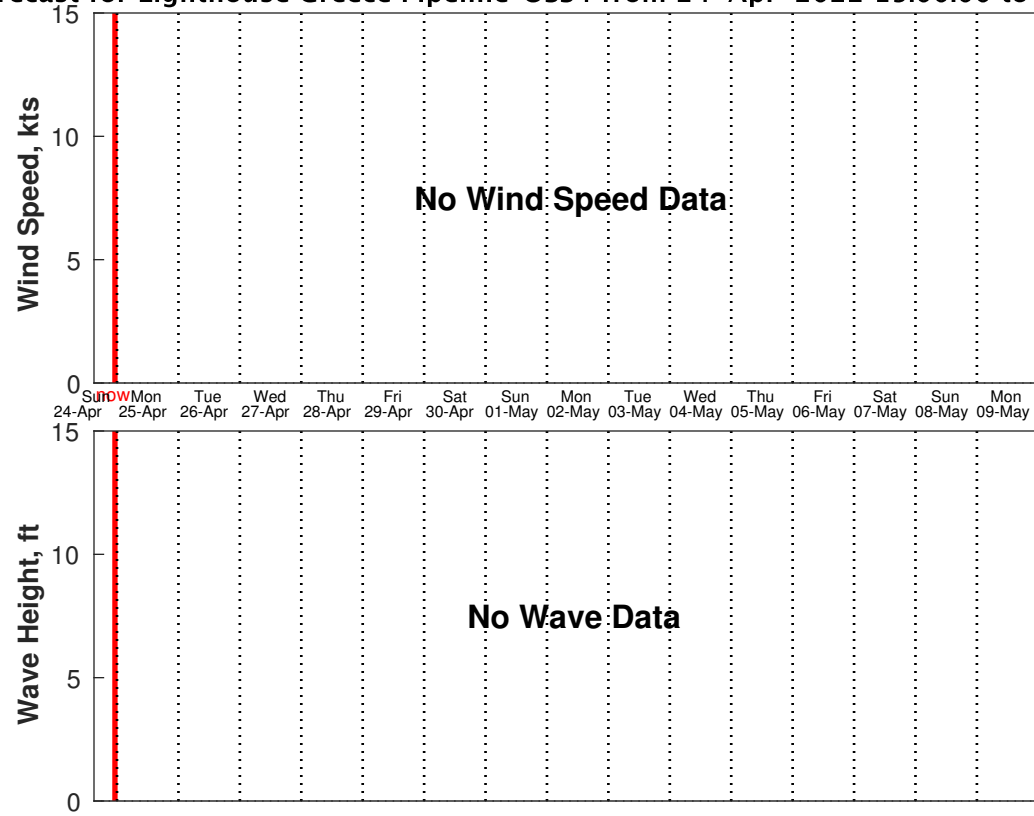
Thursday

No winds available.
No waves available.
No currents available.

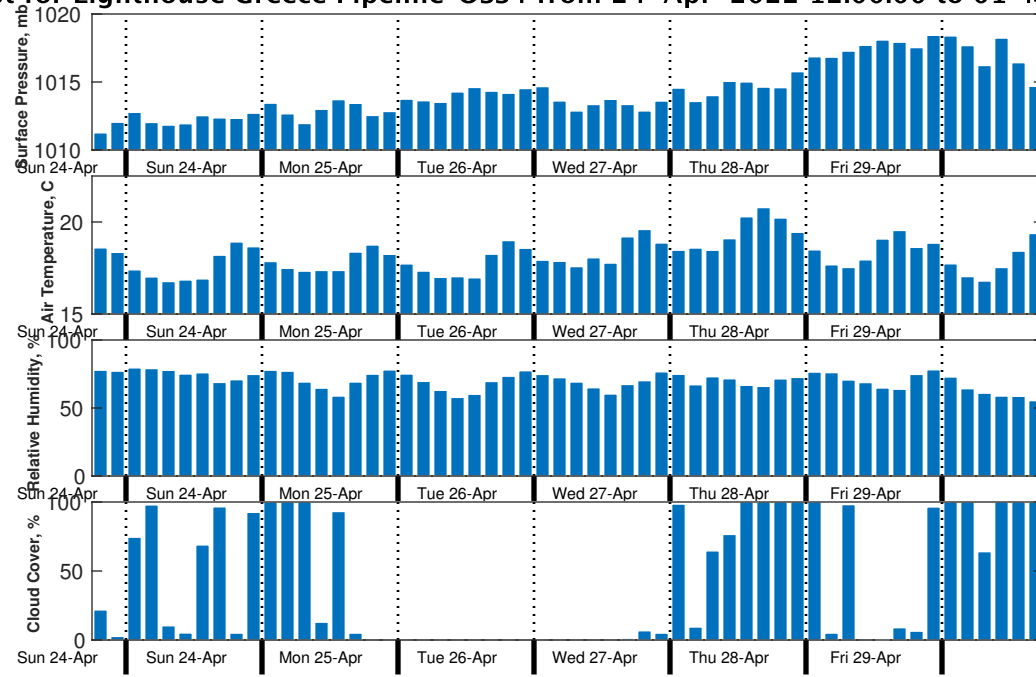
Friday Night

No winds available.
No waves available.
No currents available.

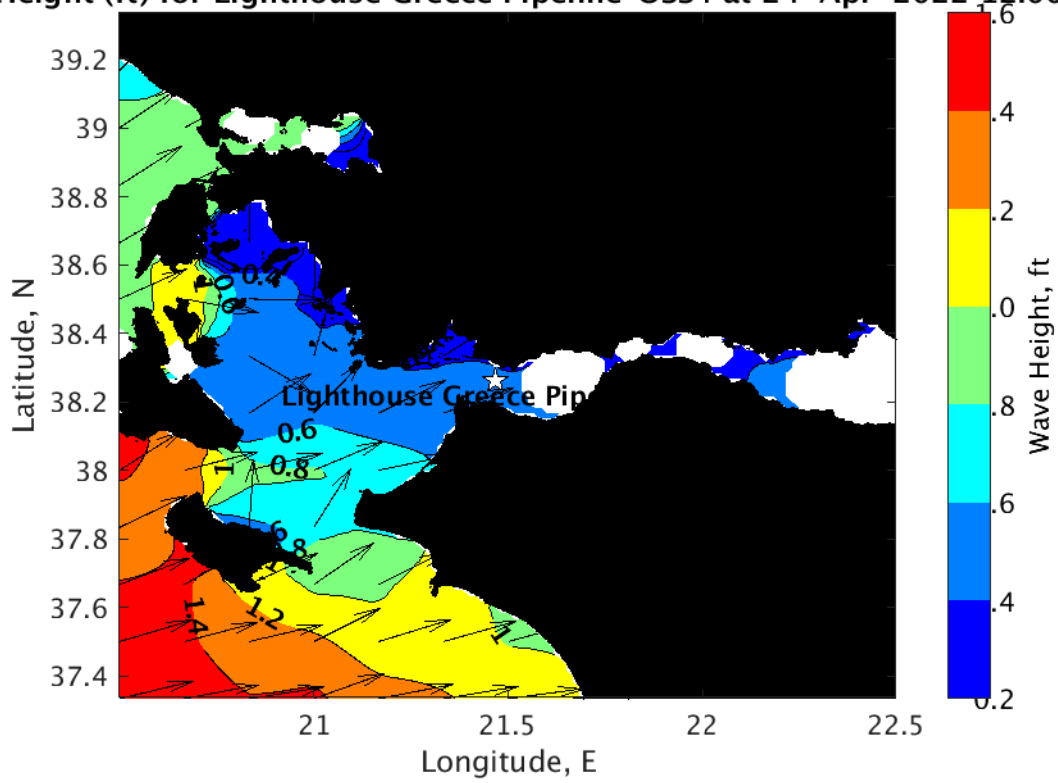
Wind & Wave Forecast for Lighthouse Greece Pipeline-OSS4 from 24-Apr-2022 15:00:00 to 10-May-2022 12:00:00



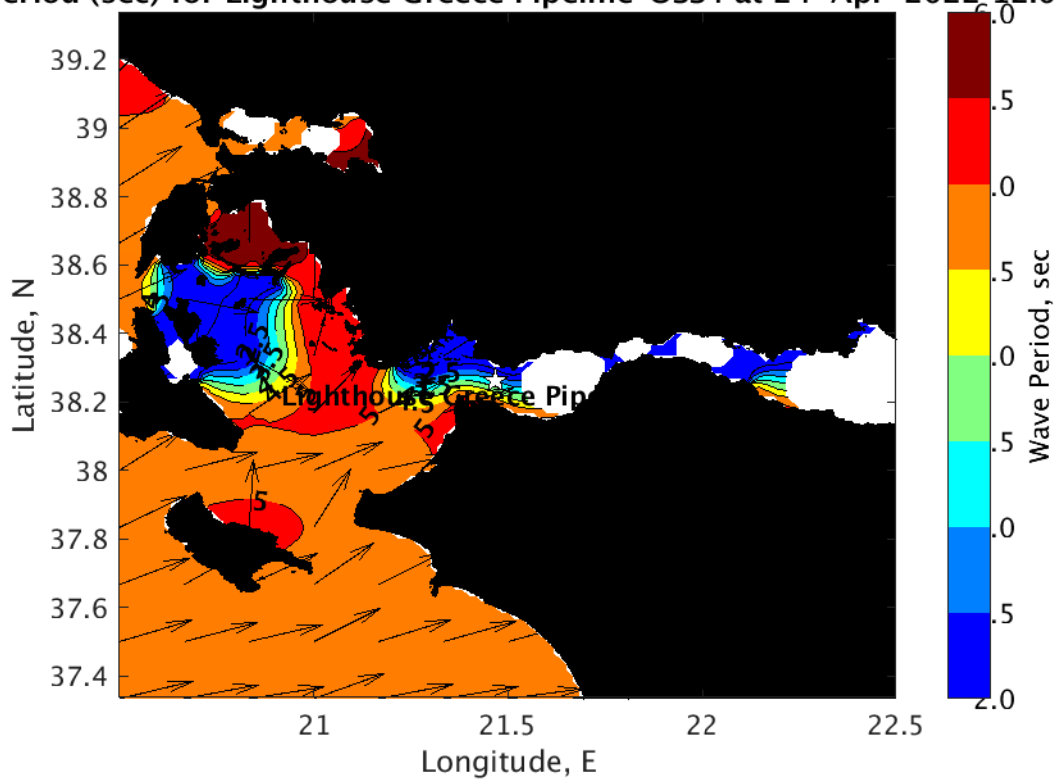
Met Forecast for Lighthouse Greece Pipeline-OSS4 from 24-Apr-2022 12:00:00 to 01-May-2022 12:00:00



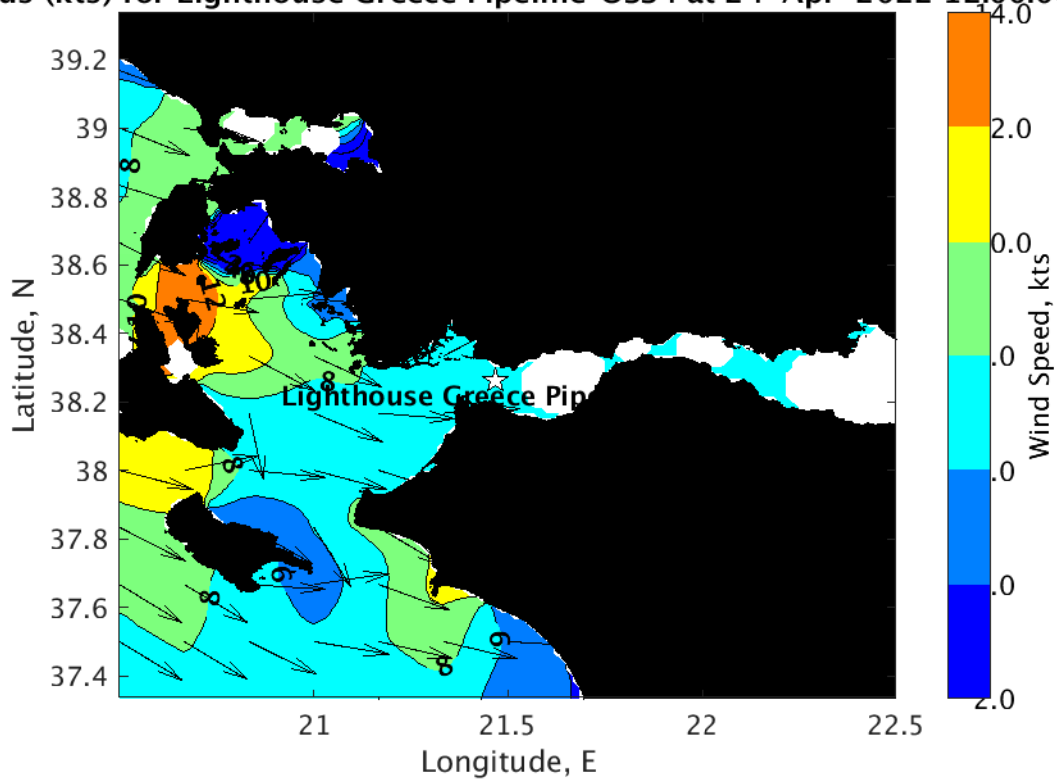
Height (ft) for Lighthouse Greece Pipeline-OSS4 at 24-Apr-2022 12:00:00



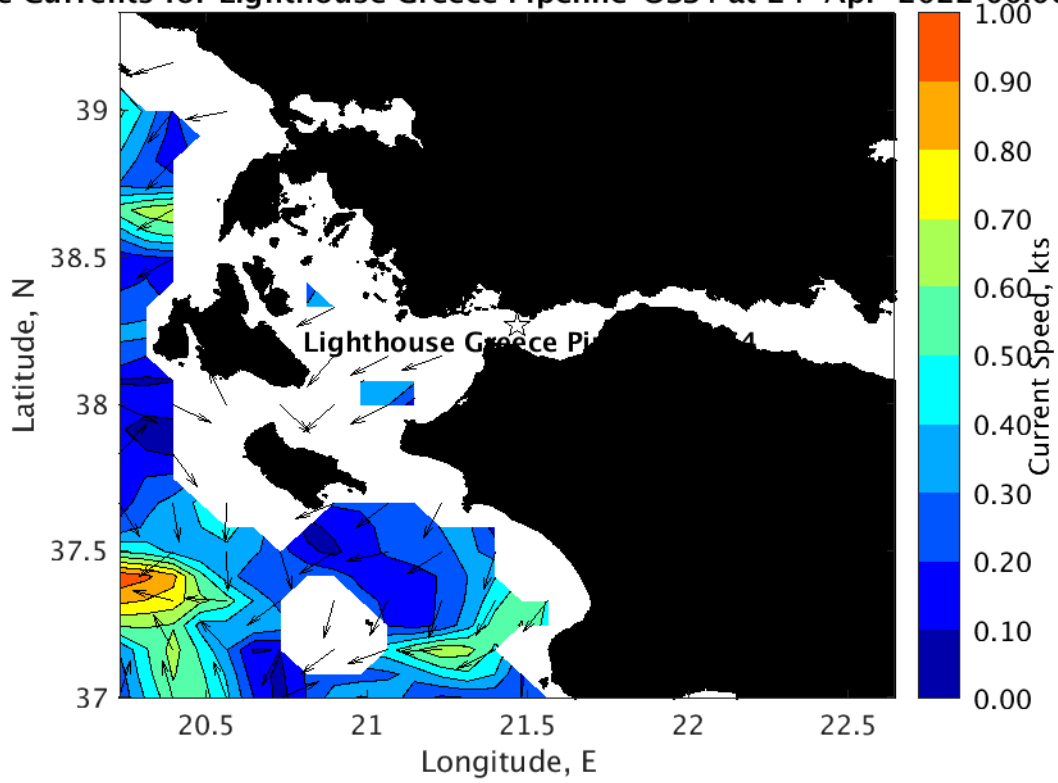
Period (sec) for Lighthouse Greece Pipeline-OSS4 at 24-Apr-2022 12:00:01



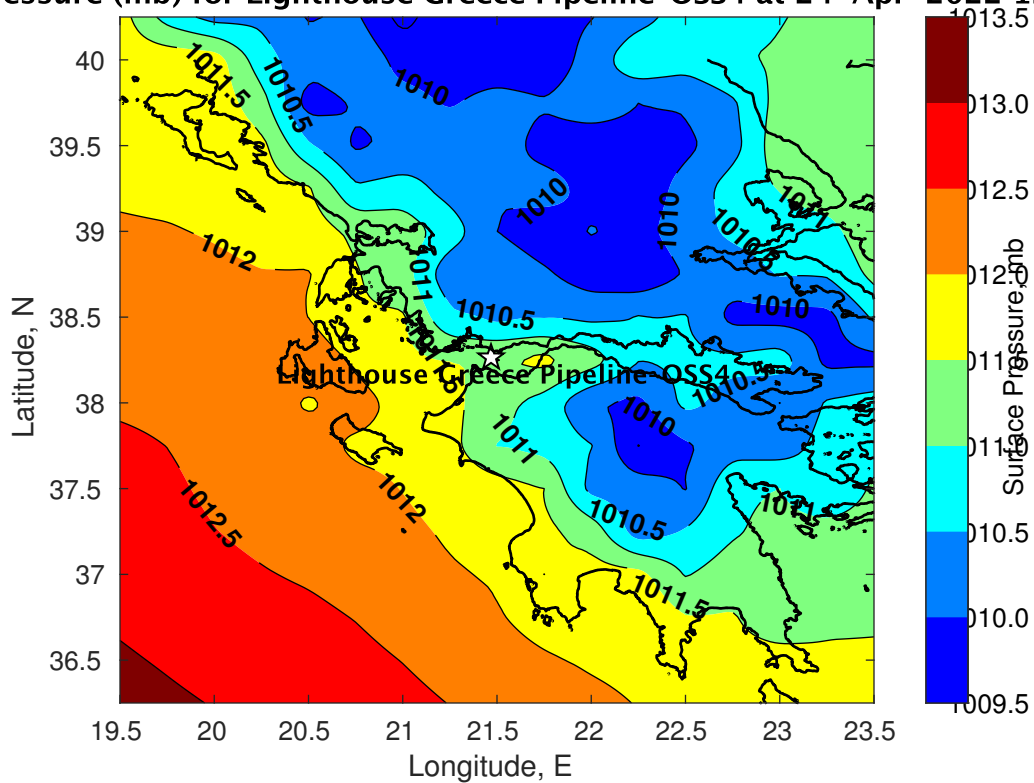
Speeds (kts) for Lighthouse Greece Pipeline-OSS4 at 24-Apr-2022 12:00:00



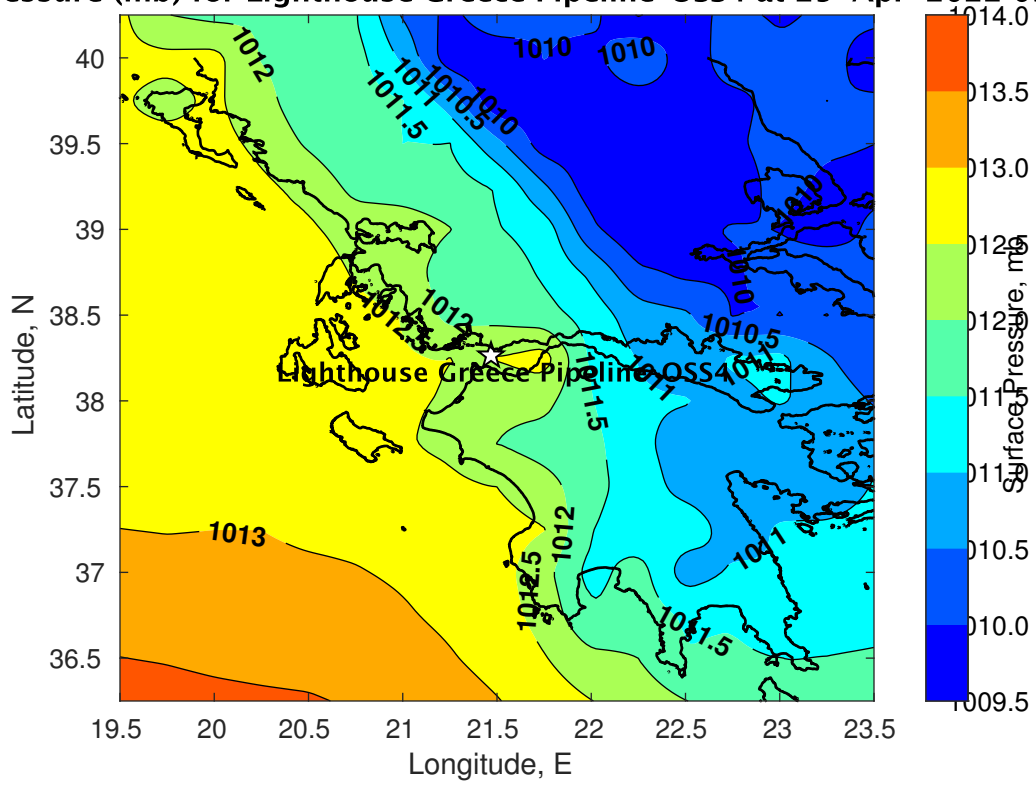
Currents for Lighthouse Greece Pipeline-OSS4 at 24-Apr-2022 00:00:00



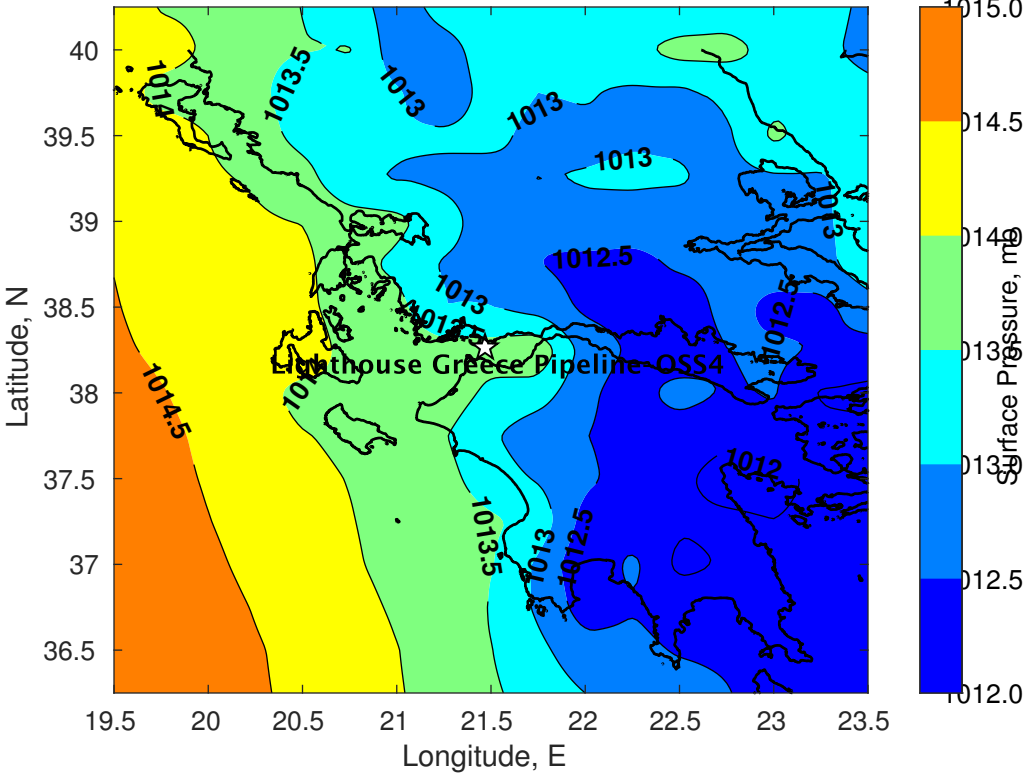
Surface Pressure (mb) for Lighthouse Greece Pipeline-OSS4 at 24-Apr-2022 12:00:00



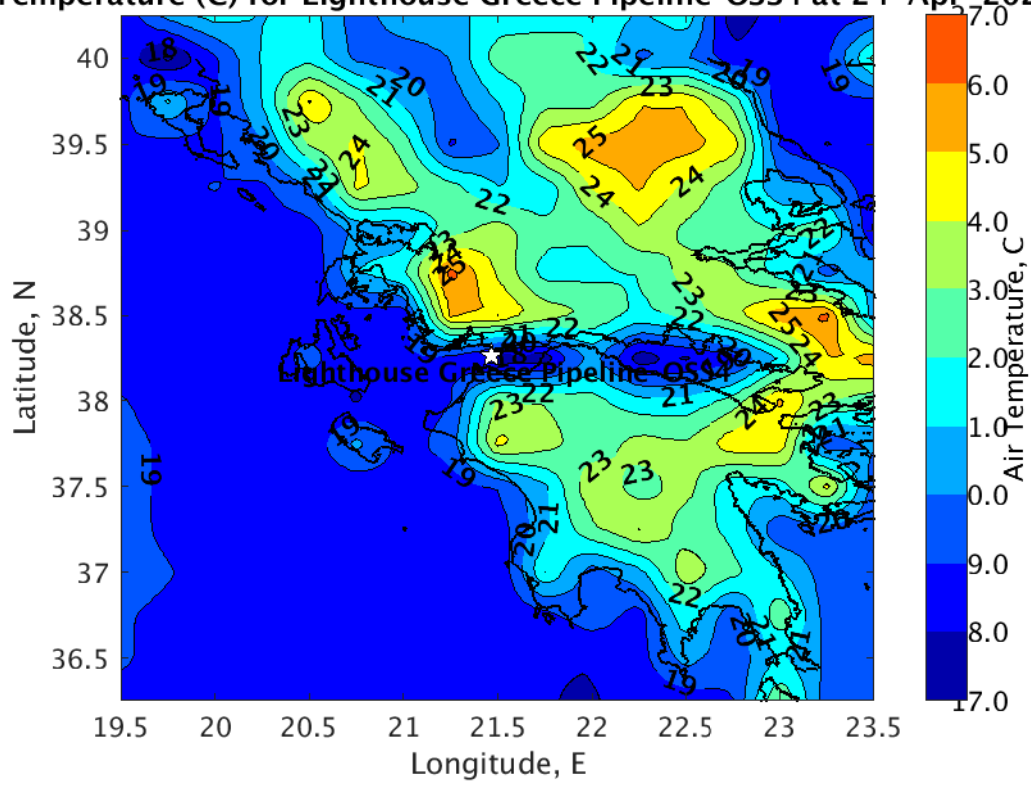
Surface Pressure (mb) for Lighthouse Greece Pipeline-OSS4 at 25-Apr-2022 09:00:00



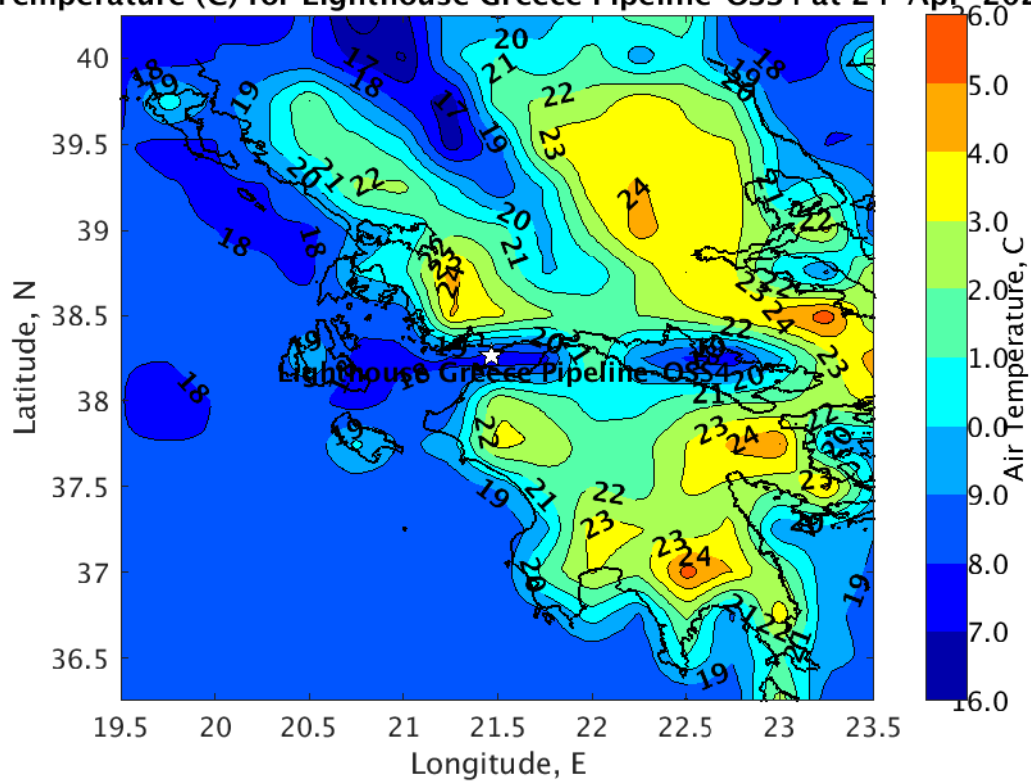
Surface Pressure (mb) for Lighthouse Greece Pipeline-OSS4 at 26-Apr-2022 09:00:00



Temperature (C) for Lighthouse Greece Pipeline-OSS4 at 24-Apr-2022



Temperature (C) for Lighthouse Greece Pipeline-OSS4 at 24-Apr-2022



Temperature (C) for Lighthouse Greece Pipeline-OSS4 at 24-Apr-2022

